

PART OF N.E. 1/4

14-3

SECTION 5, T.6N., R1W., S.L.B. & M

IN OGDEN CITY, NORTH OGDEN CITY, NORTH OGDEN DISTRICT & TOWN OF HARRISVILLE

PREFIX: 11-014

SCALE 1" = 100'

SEE PAGE 14-2

TAXING UNIT: 03, 07, 12, 13, 14, 10

PARCEL NO.
 110140007 TO 110140011
 110140024 TO 110140028
 110140034
 110140035
 110140047
 110140054

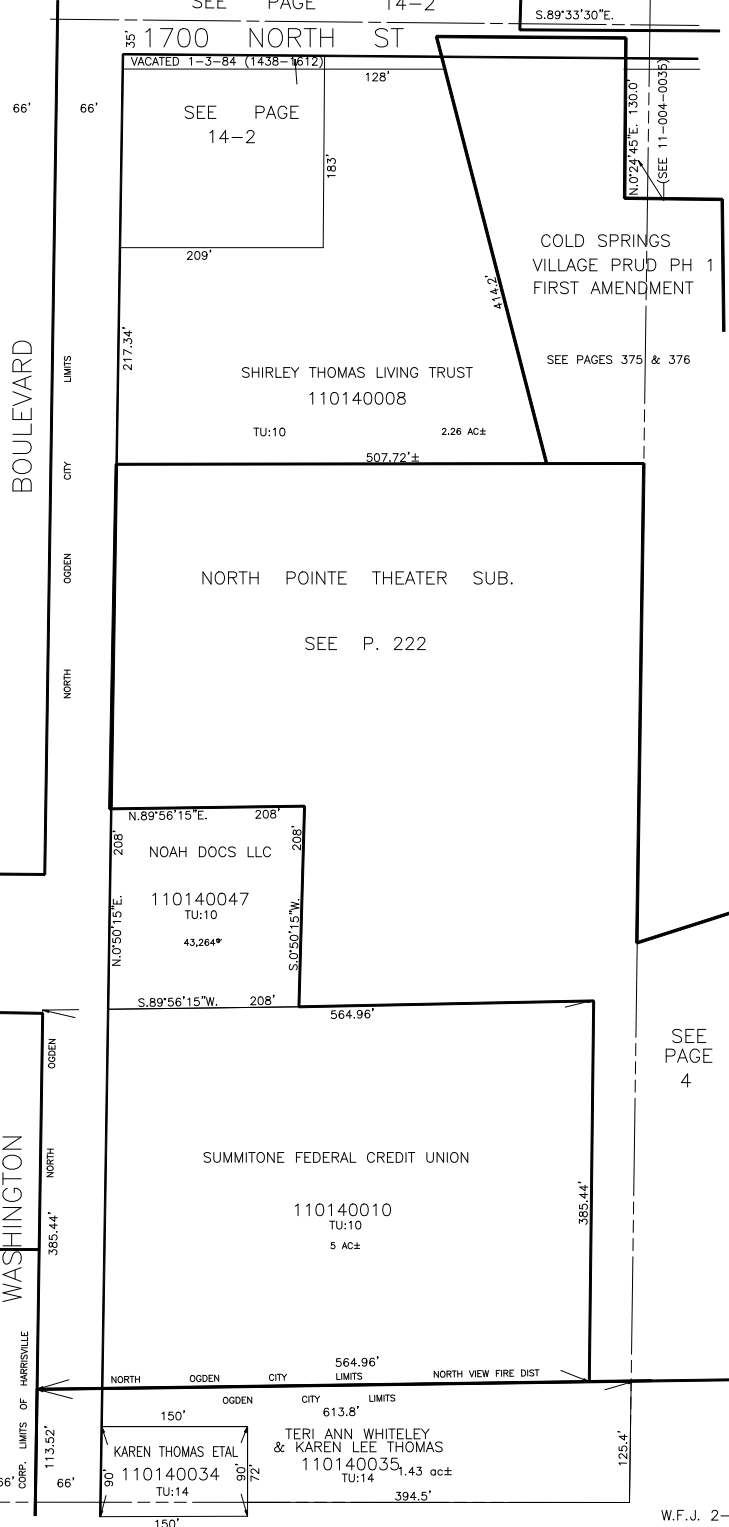
200'
 SHANNA LYN LAFLEUR
 ETAL
 110140024
 TU:07
 200'

102.30' S.89°12'E. 427.06'
 NORMAN E LONGHURST
 & WF DANIELE B
 110140052
 TU:07 1 AC±
 102.00' N.0°48'E. 102.00'
 N.89°12'W. 427.06'
 NORTH OGDEN CITY LIMITS

208.47' 256.94' 34.83'
 GOOD-ONE AUTO SALES & TRAILER RENTALS & SALES INC
 110140025
 TU 433 1.749 AC±
 1597.11' 142.21' 107' S.0°18'W.

17.57' 186.80' R.O.W.
 MATTHEW RITCHIE
 & SUNI SPOUSE
 110140026
 TU:07
 186.80'
 FAMILY TRUST AGREEMENT
 OF FRANCES EDITH SHAEFFER
 22-JUNE-2014
 110140027
 14,227* TU:07

234'
 UTANG MANAGEMENT LLC
 110140028
 TU:12 19,890 SQ FT
 15' R.O.W.



SEE PAGE 14-1

SEE PAGE 4

SEE PAGE 16

W.F.J. 2-73